

CREST RANGE

EC^{SERIES}203

EXTREME CREST SERIES

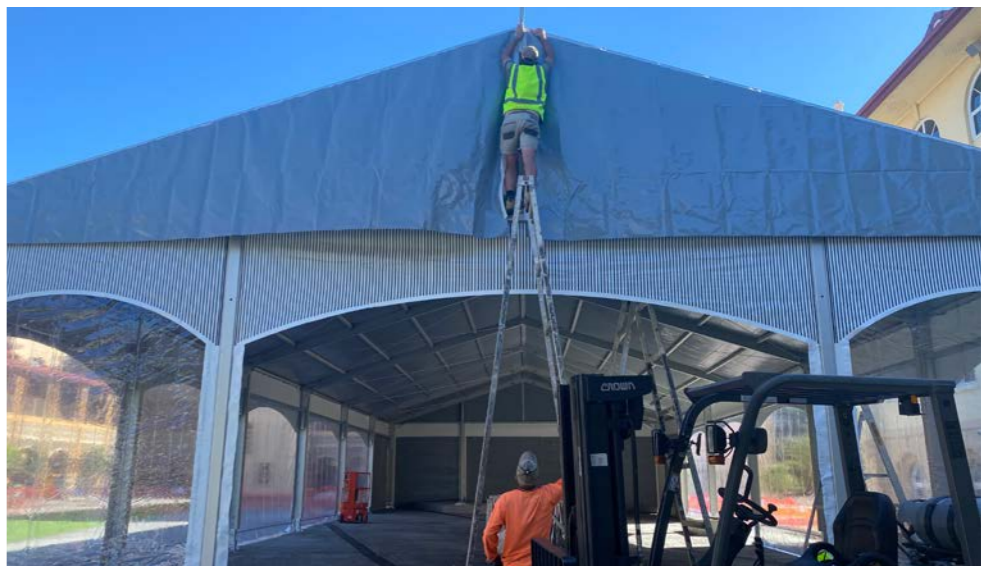
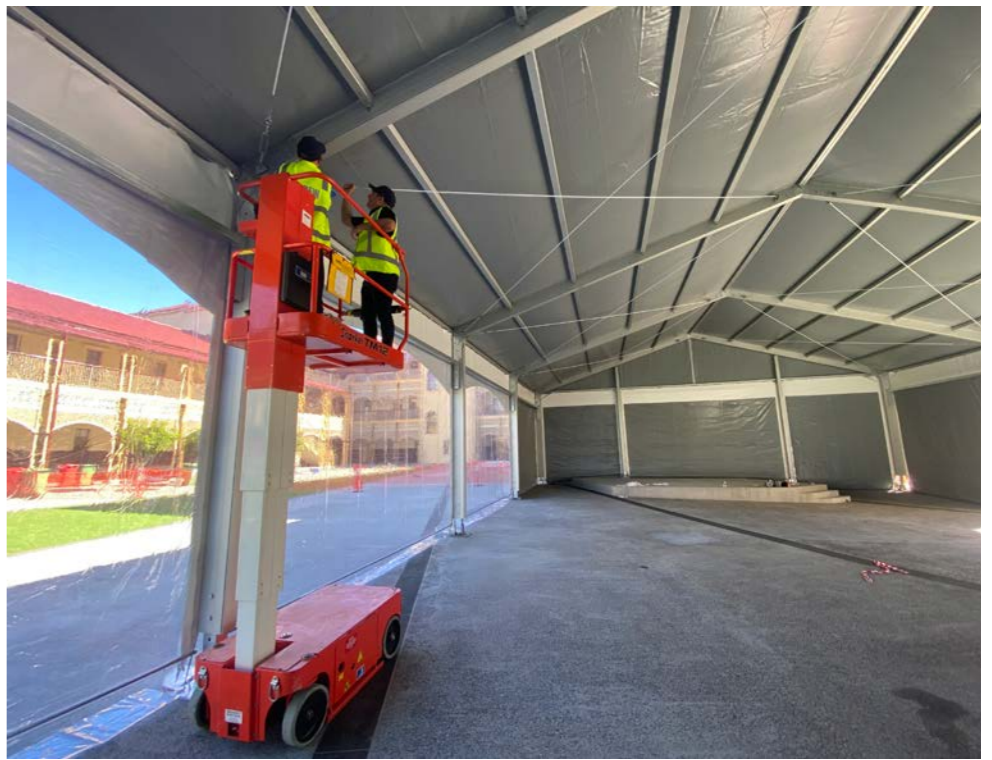
Main Profile 203 x 122 x 4mm, 4-channel



 **EXTREME MARQUEES**



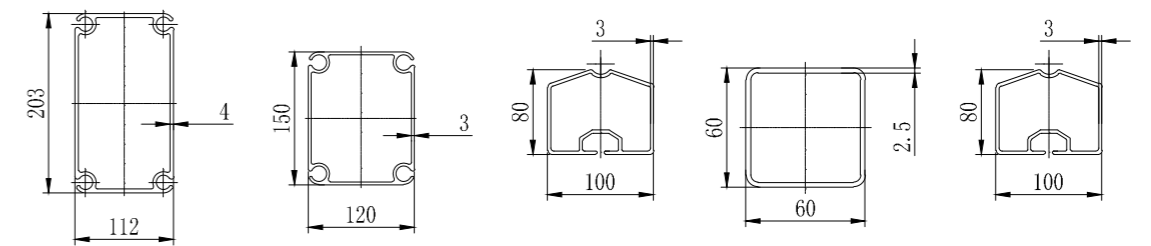
PRODUCT SHOWN
15m Span x 30m Length
EC Series 203
White Roof & White Church Style Walls





EC SERIES 203

The Extreme Crest (EC) is the biggest marquee structure in our range. The marquees are built to create clear spans for the largest commercial purposes. With clear spans ranging up to 60m.



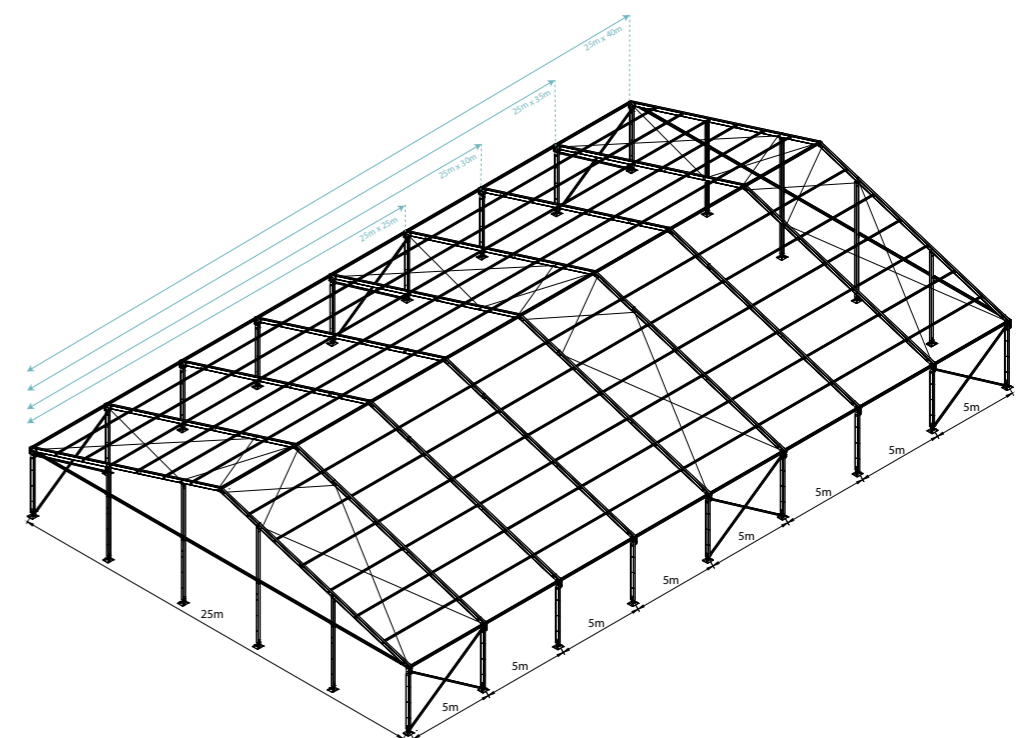
Overview

Event Marquee Size

Span Width: 15m / 20m / 25m
 Bay Distance: 5m
 Minimum Tent Length: 15m
 Maximum Tent Length: No Limit
 Roof Pitch: 18°

Frame Specifications

Eave Height: 4m
 Main Profile: 203 x 112 x 3mm
 Roof Fixing: Bar Tensioning
 Max Windspeed: 80km/hr



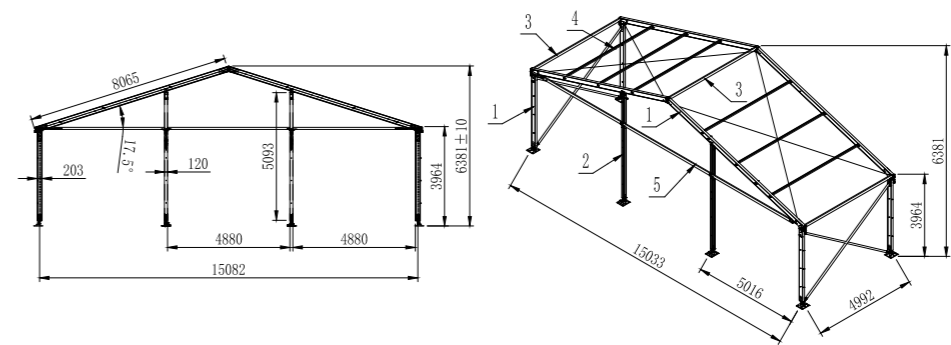
Specifications



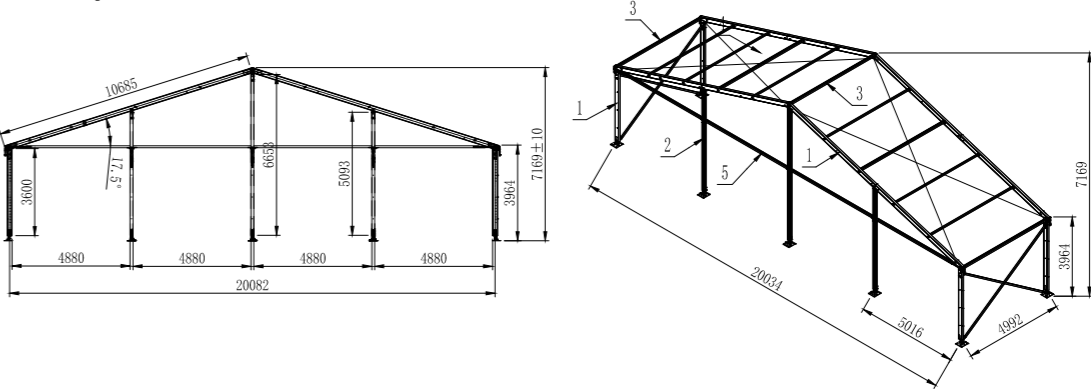
Clear-Span Width	15m	20m	25m
Eave Height	4m		
Ridge Height	6.38m	7.16m	7.95m
Roof Pitch	18°		
Bay Distance	5m		
Longest Component	8.1m	10.7m	10.7m
Minimum Tent Length	10m		
Maximum Tent Length	No Limit		
Roof Fixing	Bar Tensioning		
Main Profile	203 x 112 x 4mm (4-channel)		
Max Allowed Windspeed	100km/hr		
Eave Connection	Hot-dip galvanized steel insert		
Framework Material	Hard pressed extruded aluminium 6061/T6 (13HW)		
Cover Material Wall Fabrics	850gsm white or coloured PVC 950gsm clear PVC 650gsm White PVC		
Printing	Full Roof Digital Printing		
Engineer Certification	Fire Reterdant PVC		
Manufacturer's Warranty	10 Year Frame 5 Year White/Coloured PVC 2 Year Printed PVC/Clear PVC		

Technical Information

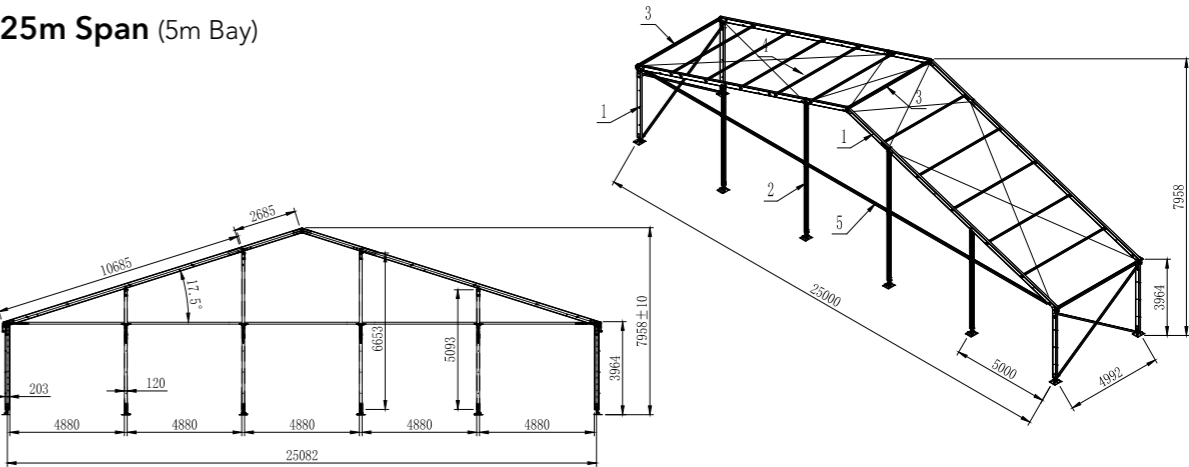
15m Span (5m Bay)



20m Span (5m Bay)



25m Span (5m Bay)



Roof Line Styles



A Frame

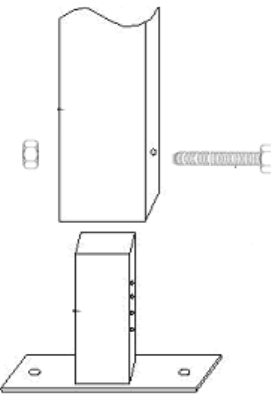


Acum

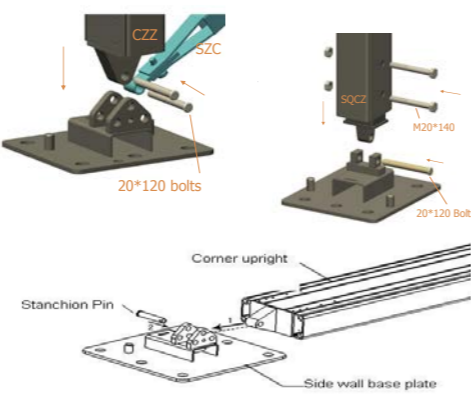


TFS

Frame Foot Plate Style



Standard Foot Plate

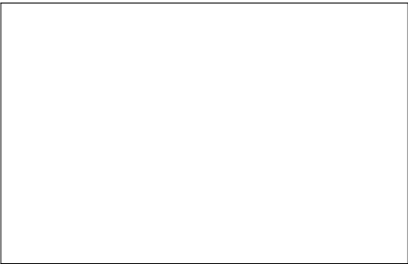


Hinge Foot Plate

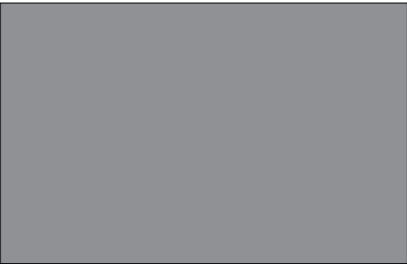
Fabric Colours

Cover Material 850gsm White or Coloured PVC | 950GSM Clear PVC

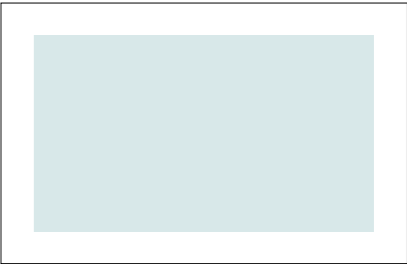
Wall Fabrics 650gsm White PVC | 850gsm Coloured PVC | 950gsm Clear PVC



White



Grey



Clear



Premium Colours

Completed projects using premium colours



Blue



Blue / clear



Black

Printing

Large format digital printing refers to method of printing from a digital based image directly to the PVC marquee material. Once the print has dried a hot lacquer is applied to the print surface to seal the print to avoid scratches.



Accessories

Transpostation Box

Transport boxes are custom to each order and are important to ensure the safety and protection of the Event Crest during transit and while in storage.



Flooring

The flooring system are solid, waterproof & incorporate anti-slip technology making them ideal for most events.

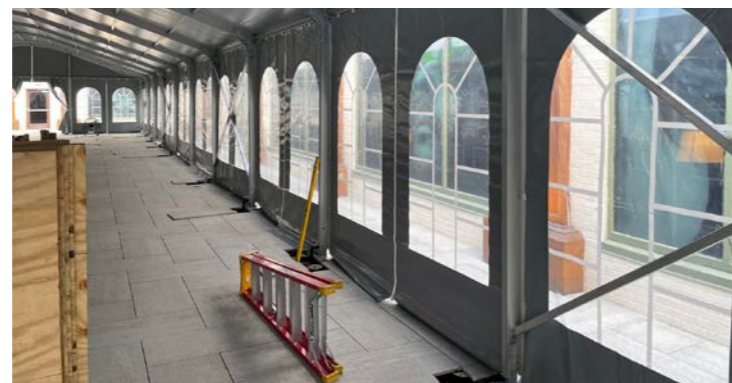
Colours:

Black and selection of woodgrain colours.



PVC Windows

Sidewalls are available with PVC clear windows in church, square, mesh and plain window varieties.



Solid Walls

Lightweight, integrated system shares the same structure as the glass panels & door units allowing these items to be easily interchanged



Glass Doors and Walls

The aluminium frame glass door system is available in both single and double-winged configurations.



Ceiling Interiors

Add internal drapes to your event marquee for a touch of elegance.



Awnings

These visually striking structural additions provide extra protection from the elements.



Portable Conditioning

The air conditioning compressor and fan unit have been built onto a steel frame that can be easily moved into position on a trolley.



What you will need for installation

- Drill / Impact Driver x2

Socket Set & Shifter

Ladder x2

Mallet

Forklift / Crane / Scissor Lift *
- Tape Measure

Stringline

Level

Marking Pencil

Stanley Knife

All crest from the Extreme Marquees range are temporary structures refer to engineer certification for more information about this product.

Ground Fixings

The frame must be fixed and secure prior to installing the roof and wall fabric.

Ensure you have the correct ground fixings for your application.

Grass: Steel Stakes
Fix each Base Plate with Steel Stakes. Ensure stakes are appropriately secured into the soft surface (Grass/Dirt).

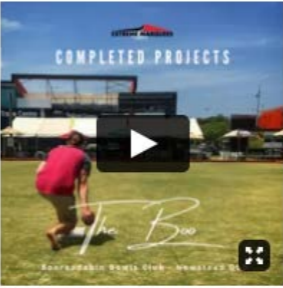
Concrete: Dynabolt
Fix each Base Plate with Dynabolts.

Weight Plate: Ground Mounting (suitable for any surface)
Each Base Plate will need to have at least 200kg.
Refer to engineer certificate for more information.
Concrete block not supplied by Extreme Marquees



Completed Projects

Click to vimeo channel





P 1300 850 832 **F** 07 3355 7720



admin@extreme-marquees.com.au

3 Bailey Court, Brendale, QLD, Australia 4500

SHOP ONLINE www.extreme-marquees.com.au