

CREST RANGE

# ED<sup>SERIES</sup>166

EVENT DELUX SERIES

Main Profile 166 x 88 x 3mm, 4-channel



EXTREME MARQUEES





**PRODUCT SHOWN**

25m Span x 50m Length

ED Series 166

Blue Roof and White Church Walls





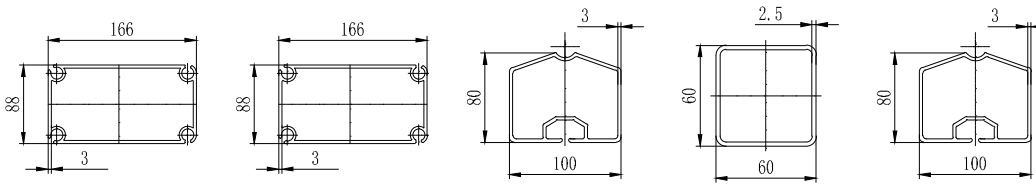




**PRODUCT SHOWN**  
15m Span x 30m Length  
ED Series 166  
White

# ED SERIES 166

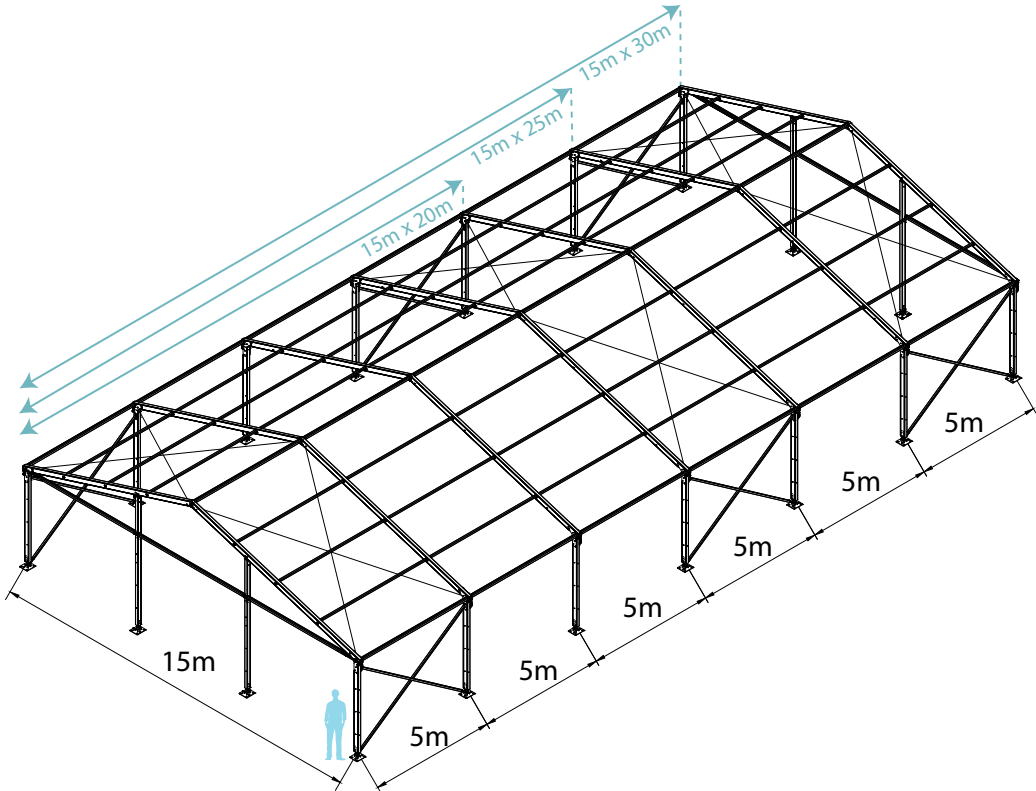
The Event Deluxe (ED) Series features large-size, robust marquees available in multiple width options, including 10m, 12m and 15m with a minimum length of 15m.



## Overview

**Event Marquee Size**  
Span Width: 10m/ 12m/ 15m  
Bay Distance: 5m  
Minimum Tent Length: 15m  
Maximum Tent Length: No Limit  
Roof Pitch: 18°

**Frame Specifications**  
Eave Height: 3m  
Main Profile: 166 x 88 x 3mm  
Roof Fixing: Bar Tensioning  
Max Windspeed: 80km/hr



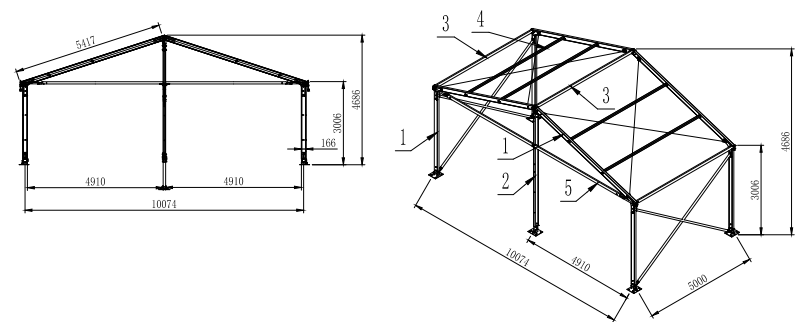
# Specifications



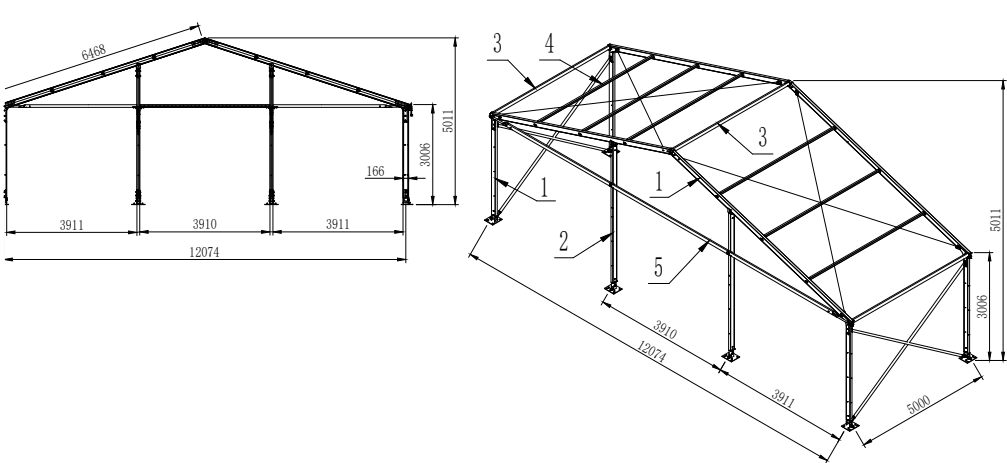
Clear-Span Width	10m	12m	15m
Eave Height	3m		
Ridge Height	4.68m	5.01m	5.49m
Roof Pitch	20°		
Bay Distance	5m		
Longest Component	5.5m	6.4m	8.1m
Minimum Tent Length	15m		
Maximum Tent Length	No Limit		
Roof Fixing	Bar Tensioning		
Main Profile	166 x 88 x 3mm (4-channel)		
Max Allowed Windspeed	80km/hr 0.3kn/m2		
Frame Upgrade Available	91.8km/hr		
Eave Connection	Hot-dip galvanized steel insert		
Framework Material	Hard pressed extruded aluminium 6061/T6 (13HW)		
Cover Material   Wall Fabrics	850gsm white or coloured PVC   950gsm clear PVC   650gsm White PVC		
Printing	Full Roof Digital Printing		
Certification	<a href="#">80kmhr Engineer Certification</a> <a href="#">91.8kmhr Upgrade Engineer</a> <a href="#">Fire Reterdant PVC</a>		
Manufacturer's Warranty	10 Year Frame   5 Year White/Coloured PVC   2 Year Printed PVC/Clear PVC		

# Technical Information

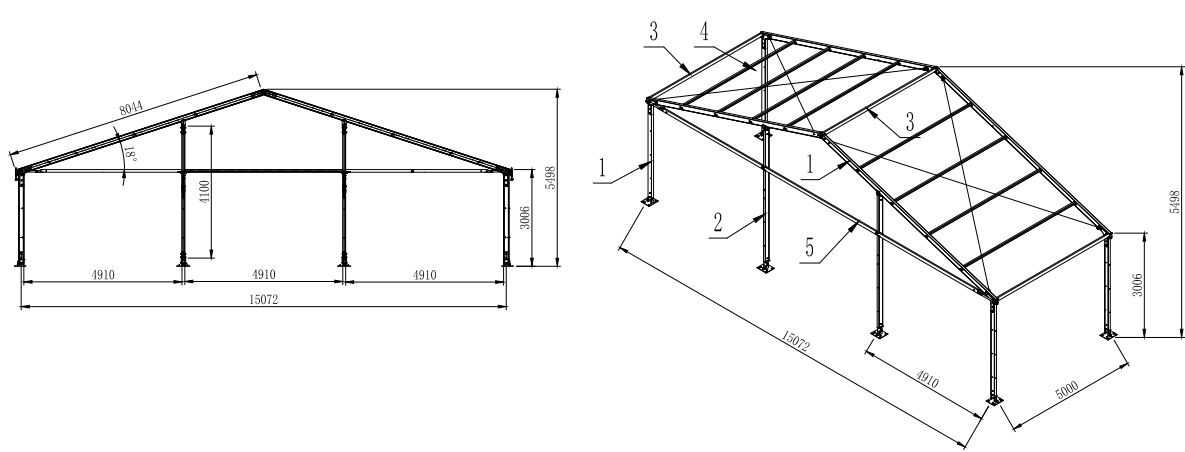
10m Span (5m Bay)



12m Span (5m Bay)



15m Span (5m Bay)





Roof Line Styles



A Frame

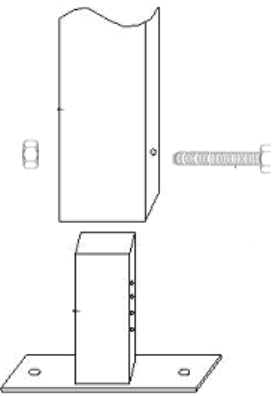


Acrum

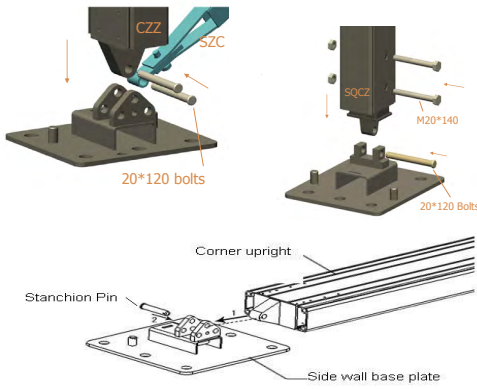
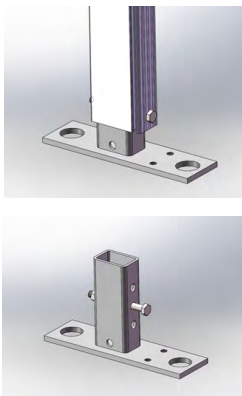


TFS

Frame Foot Plate Style



Standard Foot Plate

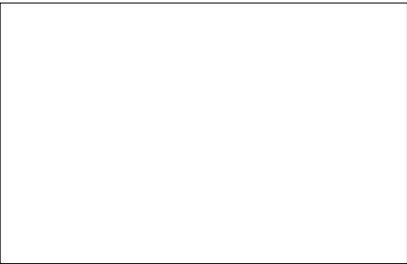


Hinge Foot Plate

Fabric Colours

**Cover Material** 850gsm White or Coloured PVC | 950GSM Clear PVC

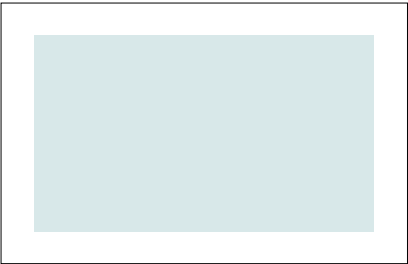
**Wall Fabrics** 650gsm White PVC | 850gsm Coloured PVC | 950gsm Clear PVC



White



Grey



Clear



Premium Colours

Completed projects using premium colours



Blue



Blue / clear



Black

Printing

Large format digital printing refers to method of printing from a digital based image directly to the PVC marquee material. Once the print has dried a hot lacquer is applied to the print surface to seal the print to avoid scratches.





# Accessories

## Transpostation Box

Transport boxes are custom to each order and are important to ensure the safety and protection of the Event Crest during transit and while in storage.



## Flooring

The flooring system are solid, waterproof & incorporate anti-slip technology making them ideal for most events.

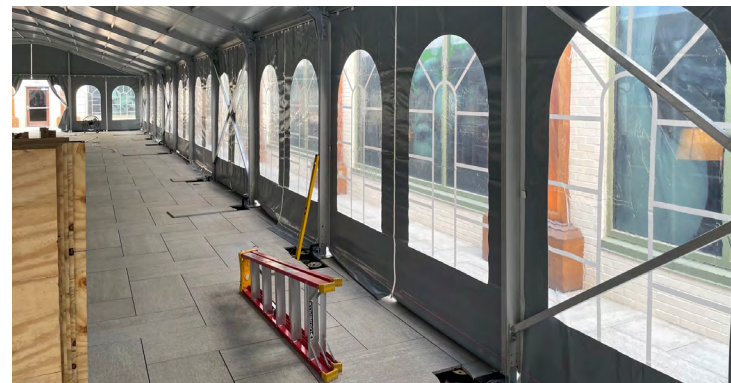
### Colours:

Black and selection of woodgrain colours.



## PVC Windows

Sidewalls are available with PVC clear windows in church, square, mesh and plain window varieties.



## Solid Walls

Lightweight, integrated system shares the same structure as the glass panels & door units allowing these items to be easily interchanged



## Glass Doors and Walls

The aluminium frame glass door system is available in both single and double-winged configurations.



## Ceiling Interiors

Add internal drapes to your event marquee for a touch of elegance.



## Awnings

These visually striking structural additions provide extra protection from the elements.



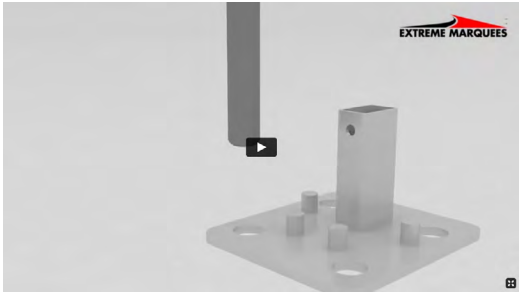
## Portable Conditioning

The air conditioning compressor and fan unit have been built onto a steel frame that can be easily moved into position on a trolley.





# Instructions



## Set-up Video

<https://vimeo.com/315811502>


# Engineer Certificates

PDF



**80km/hr  
Engineer Certification**  
ED Series 166  
<https://www.extreme-marquees.com.au/pdf/Crest/Certificates/ED-Series-166-80kmh.pdf>

PDF



**91.8km/hr  
UPGRADE  
Certification Engineer**  
ED Series 166  
<https://www.extreme-marquees.com.au/pdf/Crest/Certificates/ED-Series-166-91-8kmh-upgrade-cert.pdf>

PDF



**Fire Reterdant  
PVC Cert.**  
[https://www.extreme-marquees.com.au/pdf/Crest/Certificates/20-001180\\_emi-01.pdf](https://www.extreme-marquees.com.au/pdf/Crest/Certificates/20-001180_emi-01.pdf)

# What you will need for installation

- Drill / Impact Driver x2

Socket Set & Shifter

Ladder x2

Mallet

Forklift / Crane / Scissor Lift \*
- Tape Measure

Stringline

Level

Marking Pencil

Stanley Knife

All crest from the Extreme Marquees range are temporary structures refer to engineer certification for more information about this product.

# Ground Fixings

The frame must be fixed and secure prior to installing the roof and wall fabric.

Ensure you have the correct ground fixings for your application.

**Grass: Steel Stakes**  
Fix each Base Plate with Steel Stakes. Ensure stakes are appropriately secured into the soft surface (Grass/Dirt).

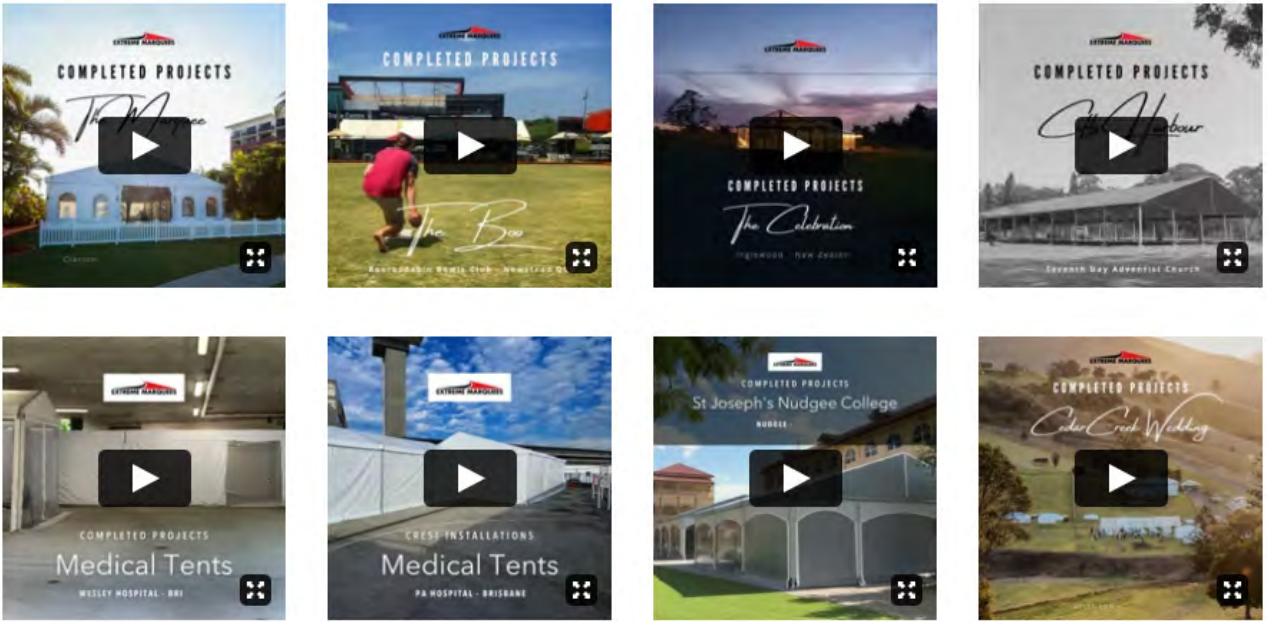
**Concrete: Dynabolt**  
Fix each Base Plate with Dynabolts.

**Weight Plate: Ground Mounting** (suitable for any surface)  
Each Base Plate will need to have at least 200kg.  
Refer to engineer certificate for more information.  
Concrete block not supplied by Extreme Marquees



# Completed Projects

Click to vimeo channel







**P** 1300 850 832   **F** 07 3355 7720



[admin@extreme-marquees.com.au](mailto:admin@extreme-marquees.com.au)

3 Bailey Court, Brendale, QLD, Australia 4500

**SHOP ONLINE** [www.extreme-marquees.com.au](http://www.extreme-marquees.com.au)