

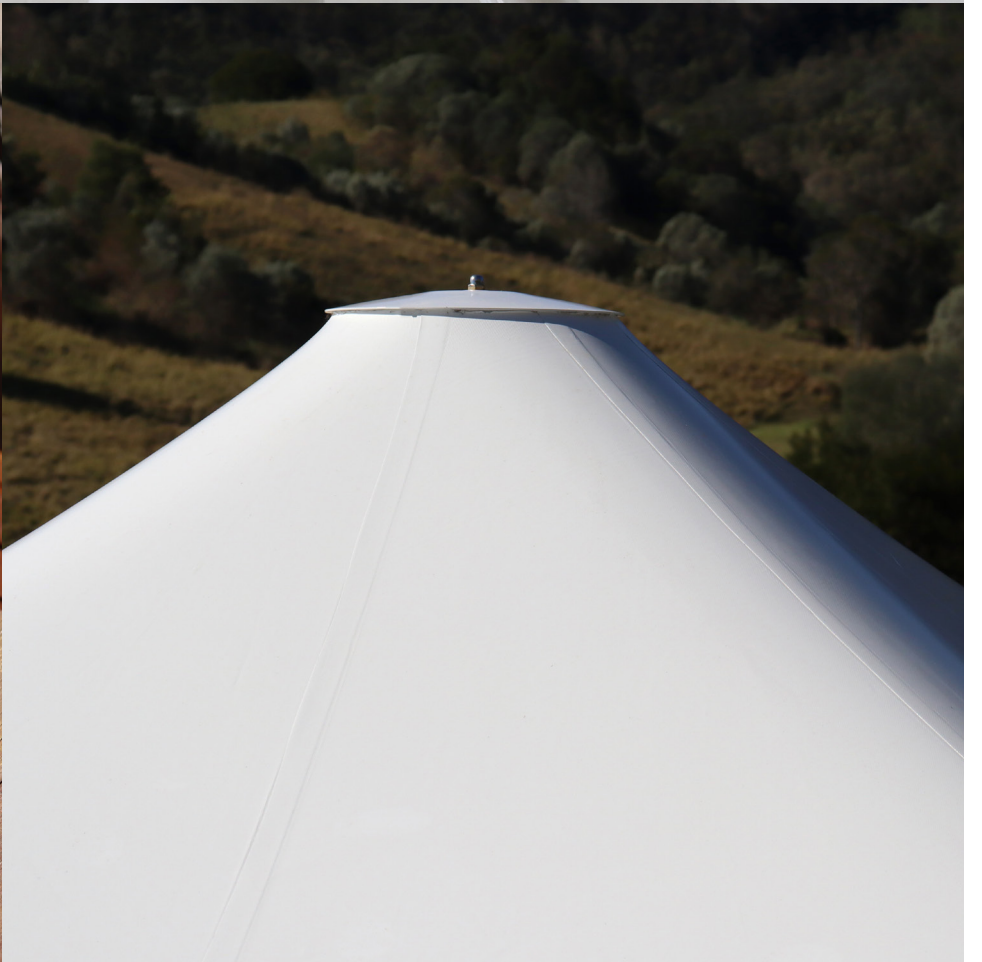


Premium Shade Solutions

300 PVC RANGE UMBRELLA



EXTREME MARQUEES





PRODUCT SHOWN
4m x 4m - 300 PVC Series
800GSM PVC - White

300PVC SERIES

Our Commercial range of umbrellas have a striking streamlined European style and are designed for permanent outdoor applications. They are engineer certified to 112 kph open or 148 kph when opened. The 90mm diameter aluminium pole extrusion ranges from 3mm to 10mm thick to ensure strength and safety. The ribs are a hefty 45mm x 60mm and are 4mm thick. The canopy is made from a heavy duty 800 gsm PVC with a lifespan of more than 10 years.



Square

2m x 2m, 3m x 3m, 3.5m x 3.5m & 4m x 4m



Hexagonal

5m Hexagonal Diameter



Specifications

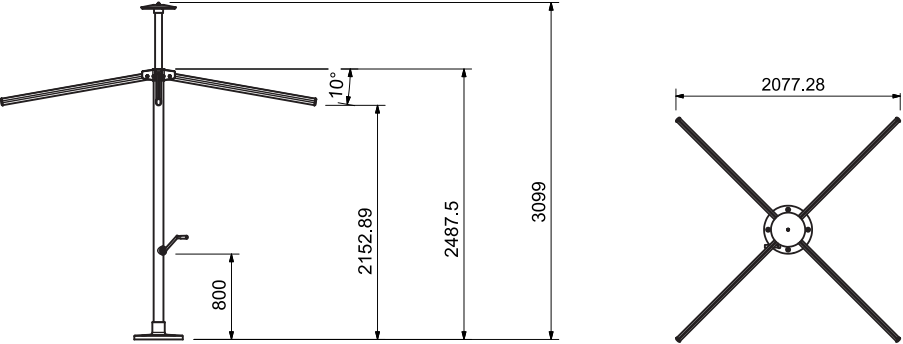


| | | | | | |
|----------------------|---|-----------------|-------------|-----------------|-----------------|
| Size | 2m x 2m | 3m x 3m | 3.5m x 3.5m | 4m x 4m | 5m Hex |
| Finished Height | 3099mm | 3099mm | 3350mm | 3469mm | 3469mm |
| Clearance | 2153mm | 2032mm | 2230mm | 2285mm | 2335mm |
| Umbrella Diameter | 2077mm | 3046mm | 3500mm | 3985mm | 5000mm |
| Total Weight | 85kg | 89kg | | 96kg | 120kg |
| Frame Pole | 90mm Diameter Powder Coated Aluminium (7mm thick) | | | | |
| Connectors | Extruded Powder Coated Aluminium | | | | |
| Truss Roof Connector | Marine Grade Stainless Steel - SAE 316 | | | | |
| Rib Bars | 61mm x 45mm Powder Coated Aluminium | | | | |
| Open / Close | Easy Lift Crank (removeable) | | | | |
| Base | Cast Steel Powder Coated | | | | |
| Roof Cap | Yes | | | | |
| Fabric | PVC 800GSM | | | | |
| Frame Colour | White | | | | |
| Printing | Full Colour Digital Printing | | | | |
| Engineer Certificate | Yes | | | | |
| Wind speed open | 112km/h | | | | |
| Wind speed closed | 148km/h | | | | |
| Transport Box | 270 x 53 x 60cm | 266 x 53 x 60cm | | 316 x 53 x 60cm | 320 x 53 x 65cm |
| Warranty | Frame 5 years Plain PVC 5 Years Printed PVC 2 Years | | | | |

Technical Information

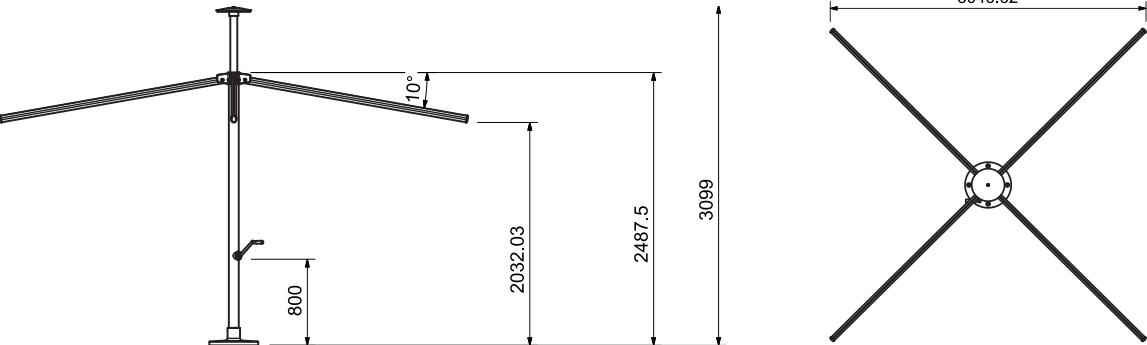
Square

2m x 2m



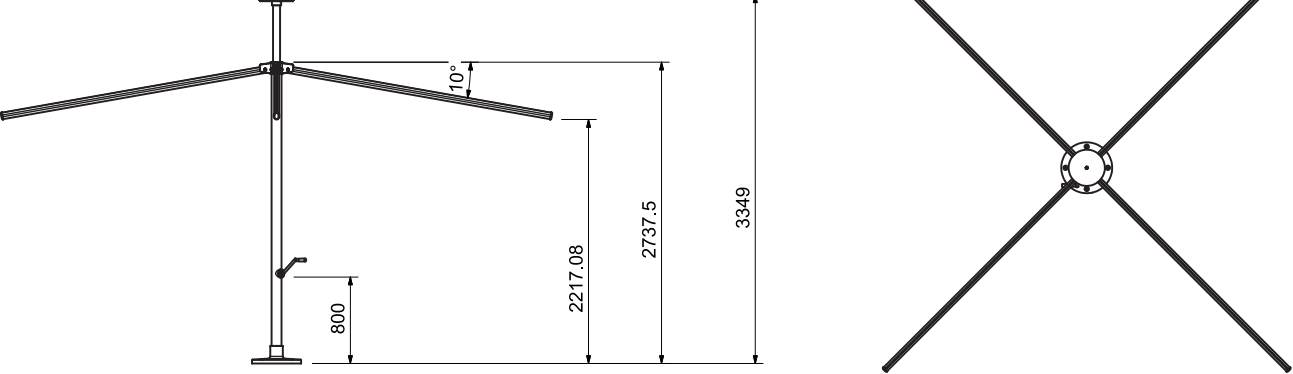
Square

3m x 3m



Square

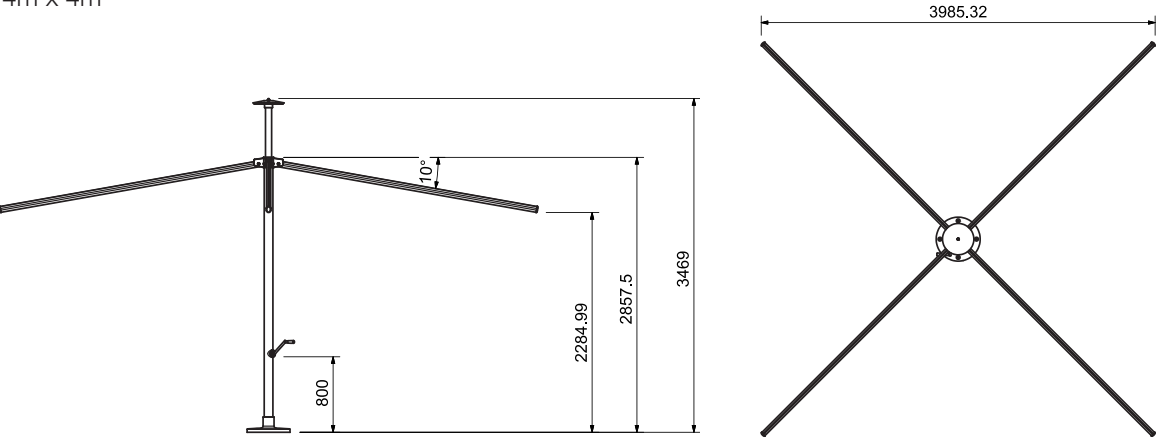
3.5m x 3.5m



Technical Information

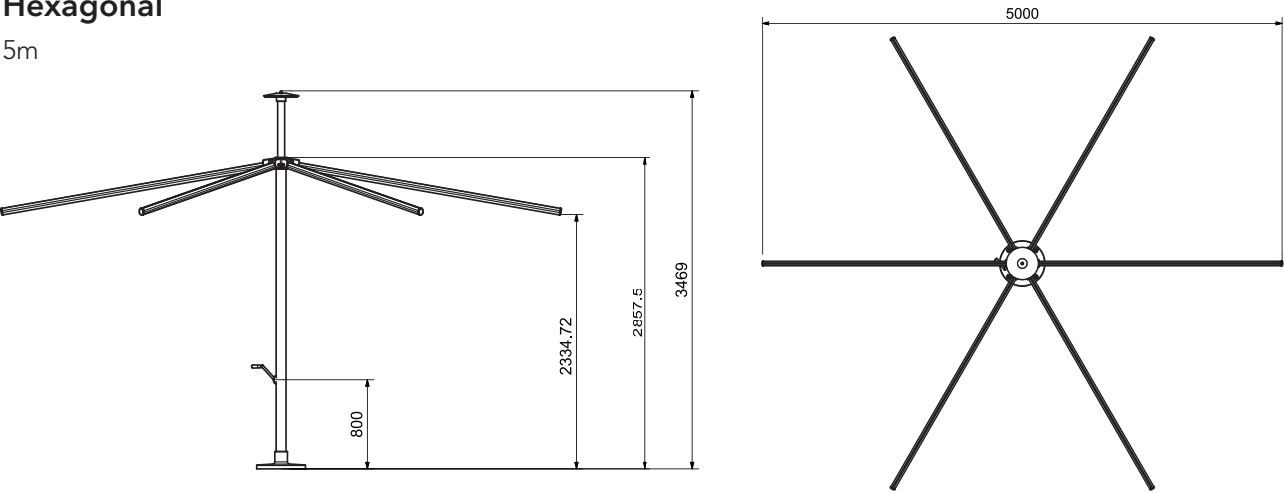
Square

4m x 4m



Hexagonal

5m



Cast Aluminium Hub

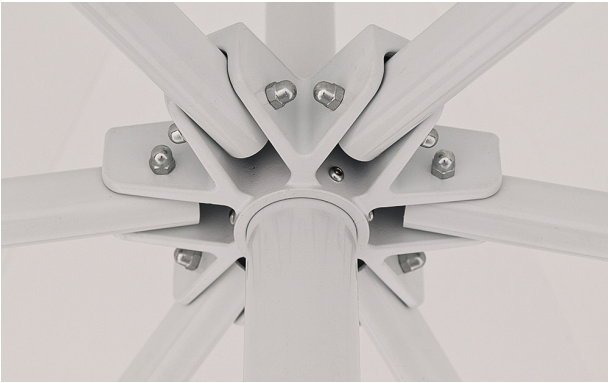
Square

2m, 3m, 3.5m & 4m



Hexagonal

5m



Fabric

800gsm Belgium 100% PVC

The Commercial 300 series is made with heavy duty 800 gsm PVC with a life-span of more than 10 years. Perfect for permanent use at restaurants, cafes or resort or home pools. The PVC is waterproof, fire retardant and is rated UV 50+ blocking out 99% of UV radiation. This heavy duty PVC is available is White.



White Pantone White



Printing

Full colour

Large format digital printing refers to method of printing from a digital based image directly to the PVC marquee material. Once the print has dried a hot lacquer is applied to the print surface to seal the print to avoid scratches.

Specifications

Large Format Digital Printing | Heat Welded Seams | Hot Lacquer | Gloss Print Finish

Features

The PVC material is long wearing ultra violet light resistant. A hot lacquer is applied to the printed surface to prevent wear, tear and scratches to the printed surface. All seams and heat welded.

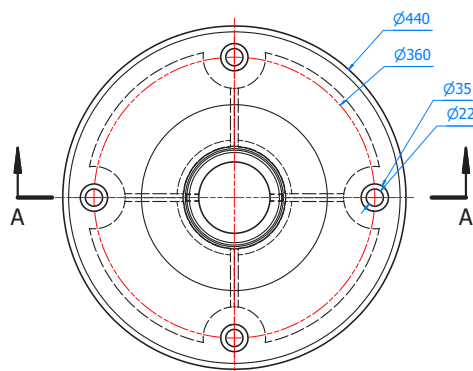
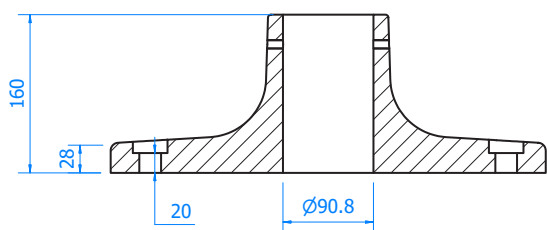
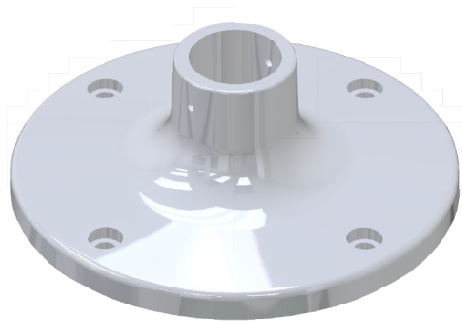


Frame Colour



Ground Fixing

Base Includes Cast Steel Base 440mm diameter **Included for all sizes*



Set-up Instruction Video

www.vimeo.com/728022534



300 PVC Series

Engineer Certificate

www.extreme-marquees.com.au/pdf/Umbrellas/Certificates/300-PVC-Engineer-Certificate.pdf



Resource Centre

Artwork Templates + More

www.extreme-marquees.com.au/resource-centre/



P 888 201 1968

admin@extrememarquees.co.nz

2/37 Glenmore Drive, Warkworth, New Zealand

SHOP ONLINE www.flare-shade.com.au

P 1300 850 832

admin@extreme-marquees.com.au

3 Bailey Court, Brendale, QLD, Australia 4500

SHOP ONLINE www.extreme-marquees.com.au

